

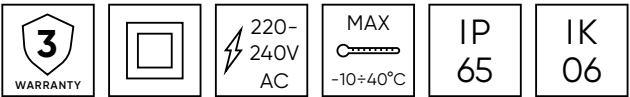
LED line

VANTA-II





HERMETIC LUMINAIRE VANTA-II



Compatible light source:
T8 fluorescent lamps

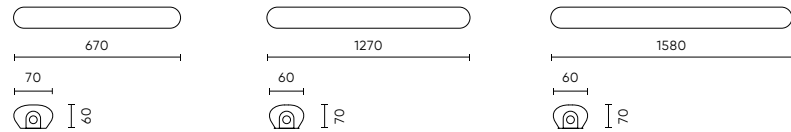
Base:
G13

Length [cm]:
60, 120, 150

Housing:
ABS

Diffuser:
Polistyren

Power supply sources:
Single-sided and double-sided



Key features:

- ▶ IP65 protection class - dust and water resistance
- ▶ Durable construction made of ABS plastic and PS diffuser
- ▶ Very favourable price-quality ratio
- ▶ Standard G13 sockets - easy replacement of light sources
- ▶ Compatible with T8 LED fluorescent lamps

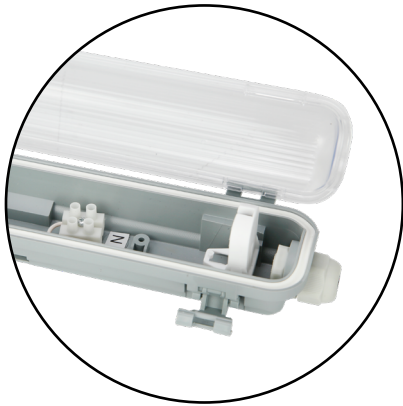
Application:

- ▶ Garages and car parks
- ▶ Workshops and technical services
- ▶ Utility rooms and back rooms

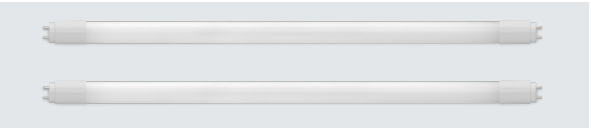
Durable, proven and simple design

The VANTA-II luminaire has been designed with simplicity, reliability and ease of installation in mind. The robust ABS plastic housing and polystyrene (PS) diffuser guarantee resistance to mechanical damage and external factors. The design, adapted for T8 LED fluorescent lamps powered on one side, ensures simple installation and the possibility of operation in single and double lamp configurations. It is a proven solution that combines durability, functionality and economy of use. Now in its second, new version.

**VANTA-II for one
T8 LED source**



**VANTA-II for two
T8 LED sources**



▶ T8 LED fluorescent tubes sold separately

Technical specifications



length	source	symbol
60cm	T8x1	203860-II
60cm	T8x2	203877-II



length	source	symbol
120cm	T8x1	203884-II
120cm	T8x2	203891-II



length	source	symbol
150cm	T8x1	203907-II
150cm	T8x2	203914-II



LED line

WE CO-CREATE



LEDIN Group Sp. z o.o.
Dębowa 1
07-410 Tobolice
Poland

export@ledline.pl
ledline.eu

 /LEDIN Group Sp. z o.o.

 /LED line

 /LED line