

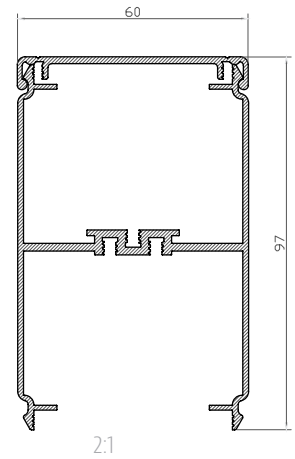
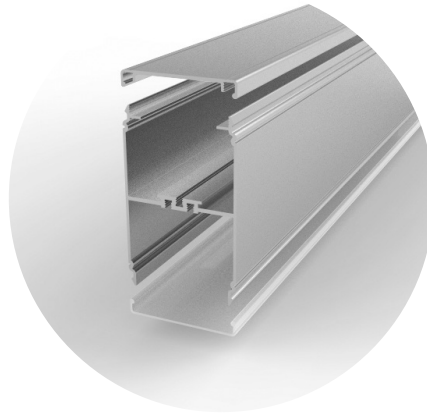


TECH

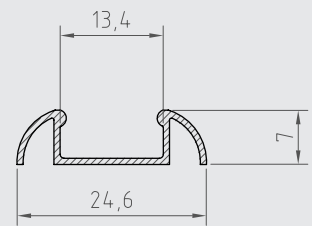
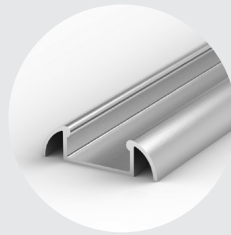
L I G H T

PROFILE LED

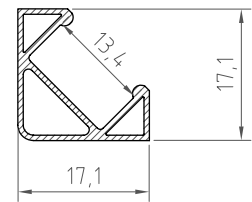
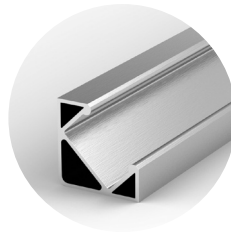
Profil liniowy
P1-1



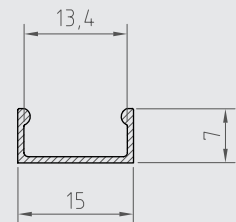
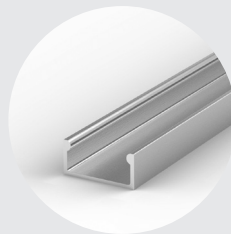
Profil nawierzchniowy
P2-1



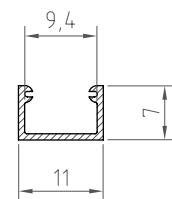
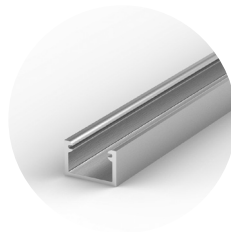
Profil kątowy
P3-1



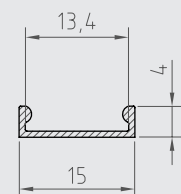
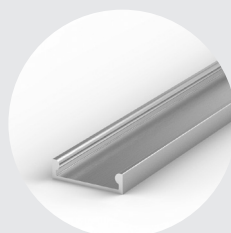
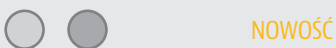
Profil nawierzchniowy
P4-1



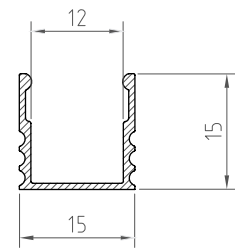
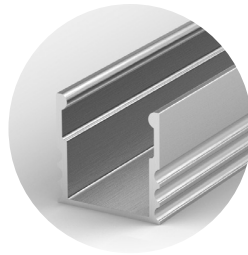
Profil nawierzchniowy
P4-2



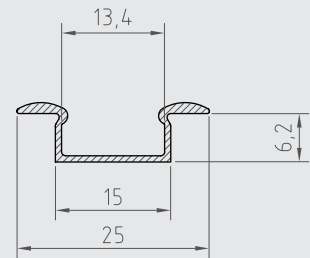
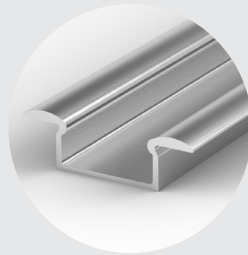
Profil nawierzchniowy
P4-3



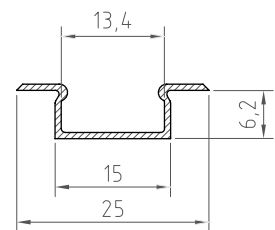
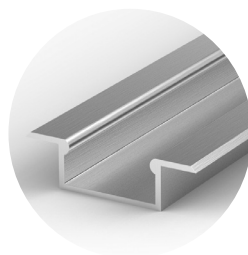
Profil nawierzchniowy
P5-1



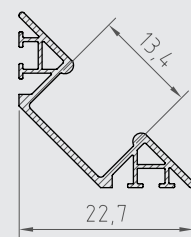
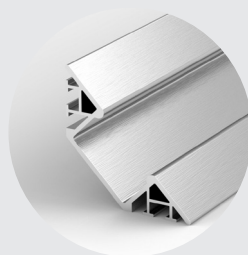
Profil wpuszczany
P6-1



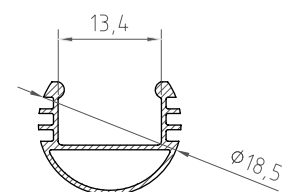
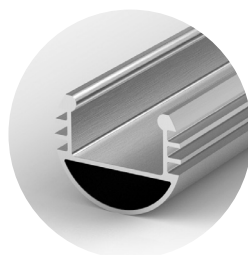
Profil wpuszczany
P6-2



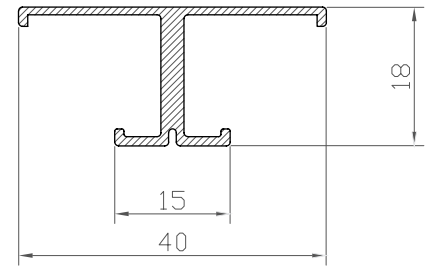
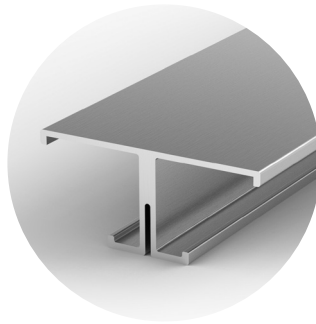
Profil kątowny
P7-1



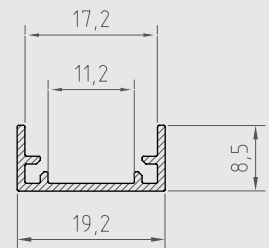
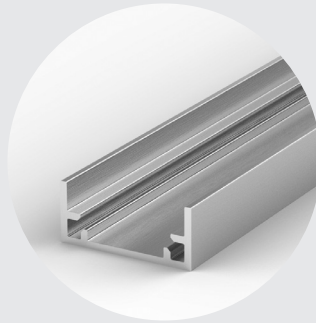
Profil drążkowy
P8-1



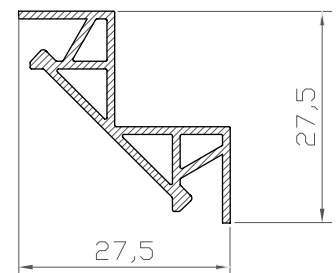
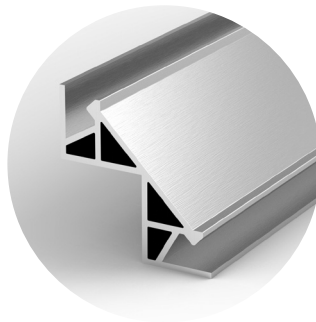
Profil meblowy
P9-1



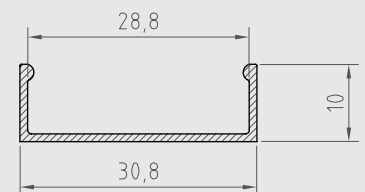
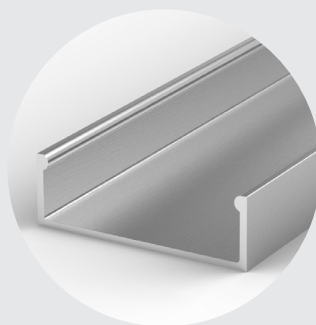
Profil hermetyczny
P11-1



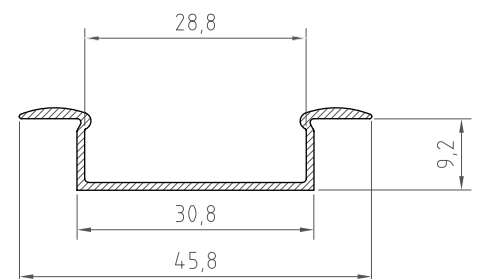
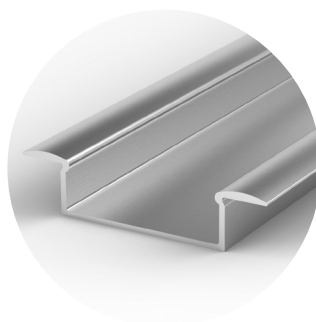
Profil wpuszczany
P12-1



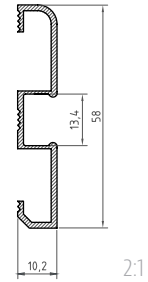
Profil nawierzchniowy
P13-1



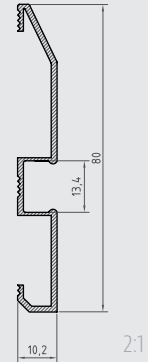
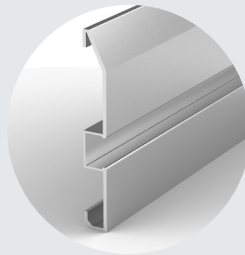
Profil wpuszczany
P14-1



Profil przypodłogowy
P15-1



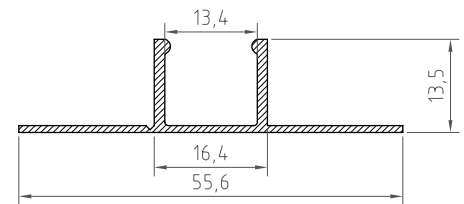
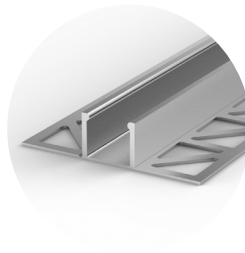
Profil przypodłogowy
P16-1



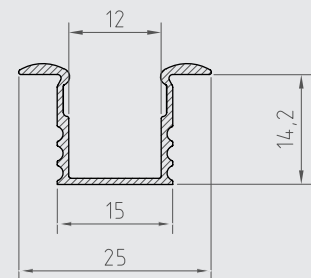
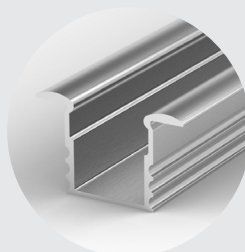
Profil nawierzchniowy
P17-1



NOWOŚĆ



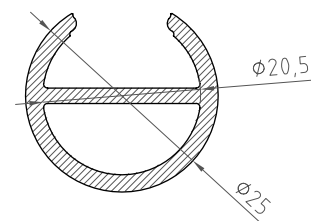
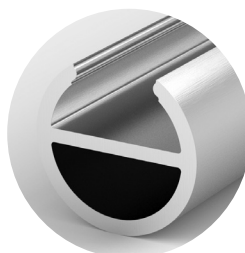
Profil wpuszczany
P18-1



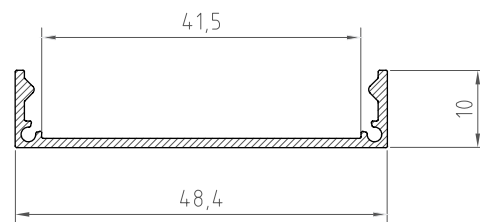
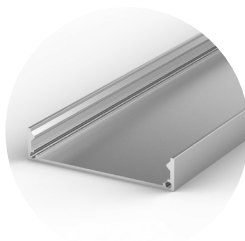
Profil drążkowy
P19-1

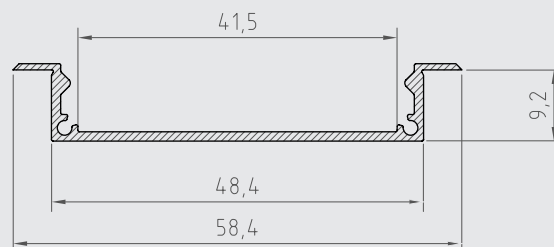
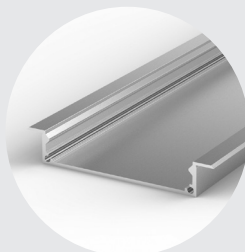


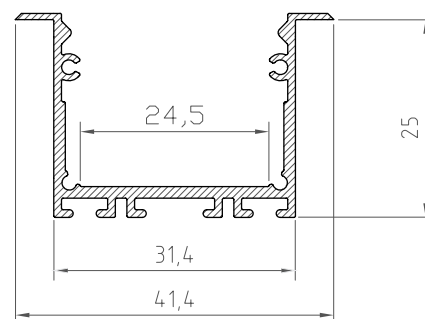
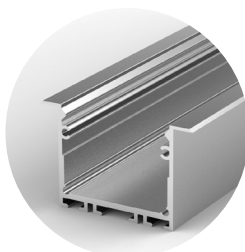
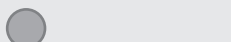
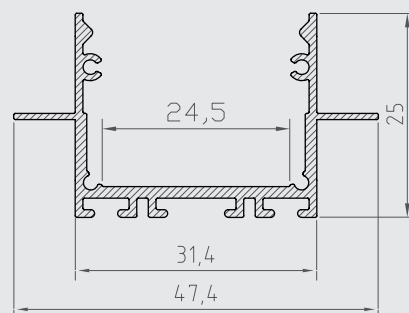
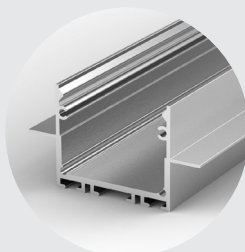
NOWOŚĆ

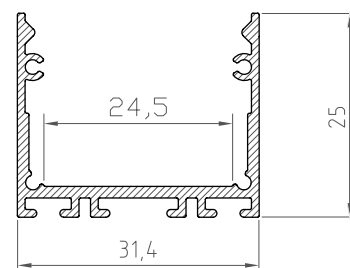
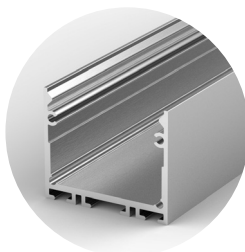
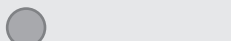
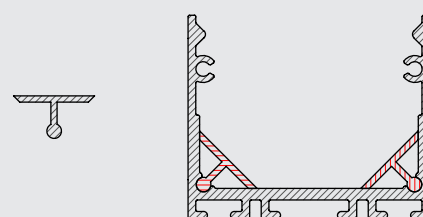
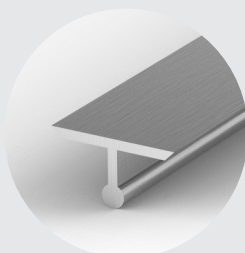


Profil nawierzchniowy
P20-1

 NOWOŚĆ

 Profil wpuszczany
P21-1

 NOWOŚĆ

 Profil architektoniczny
P22-1

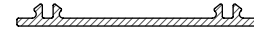
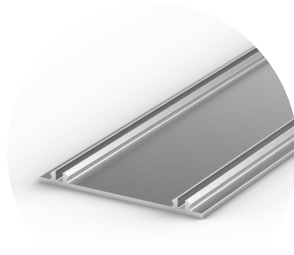
 NOWOŚĆ

 Profil architektoniczny
P22-2

 NOWOŚĆ

 Profil architektoniczny
P22-3

 NOWOŚĆ

 Profil doświetleniowy
P22-4

 NOWOŚĆ


Profil montażowy
P22-5



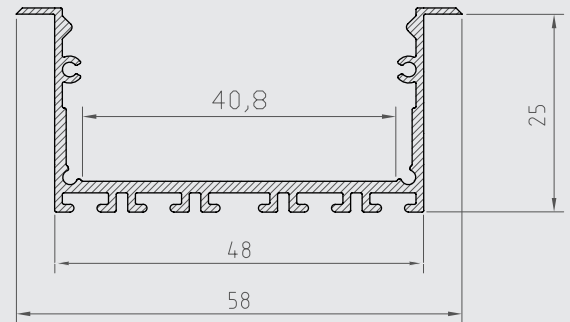
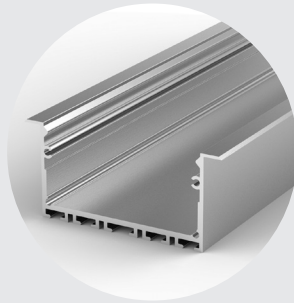
NOWOŚĆ



Profil architektoniczny
P23-1



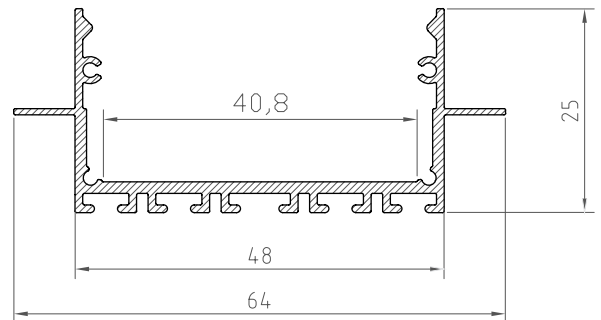
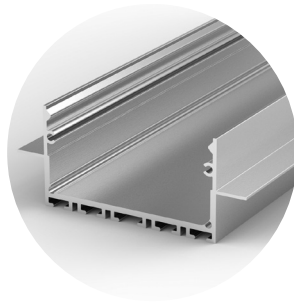
NOWOŚĆ



Profil architektoniczny
P23-2



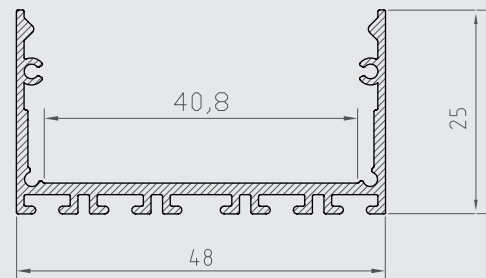
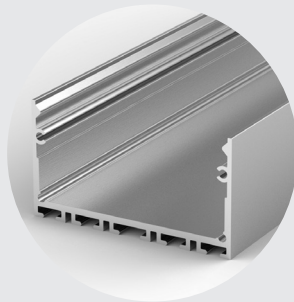
NOWOŚĆ



Profil architektoniczny
P23-3



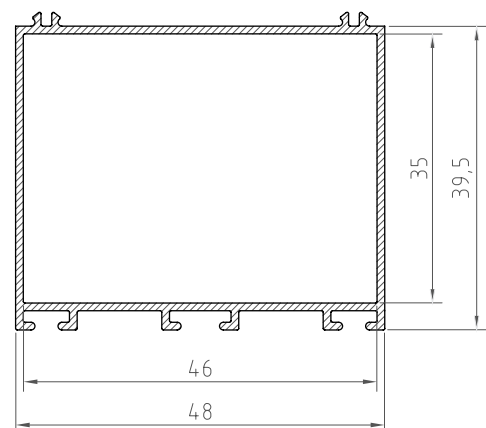
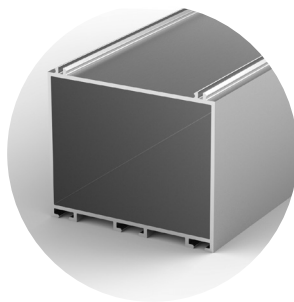
NOWOŚĆ



Profil architektoniczny
P23-4



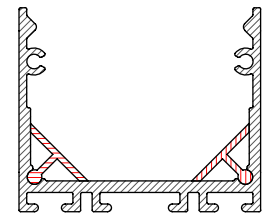
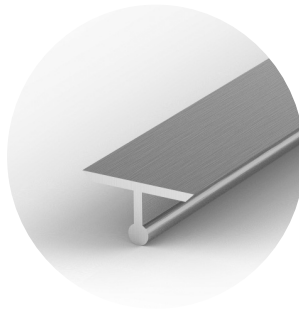
NOWOŚĆ



Profil doświetleniowy
P23-5



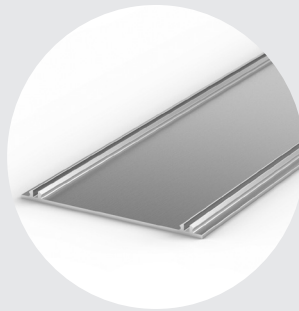
NOWOŚĆ



Profil montażowy
P23-6



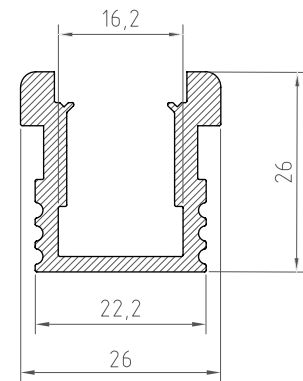
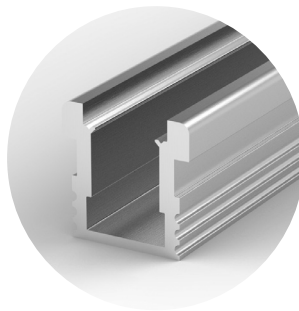
NOWOŚĆ



Profil najazdowy
P24-1



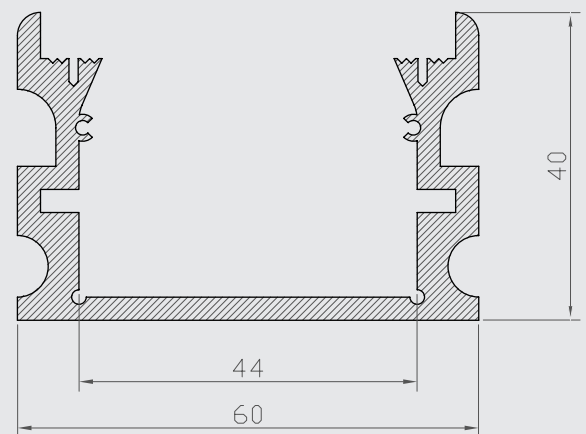
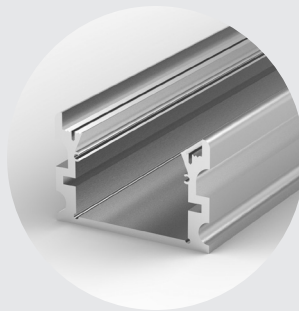
NOWOŚĆ



Profil najazdowy
P24-2



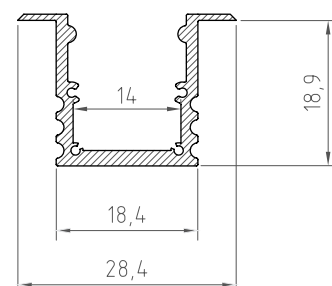
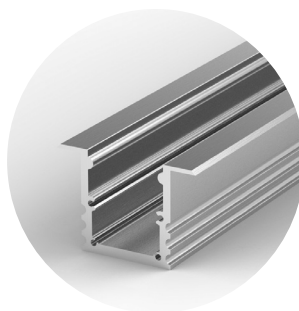
NOWOŚĆ



Profil architektoniczny
P25-1



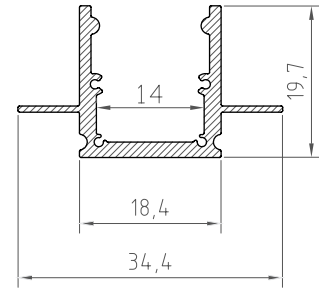
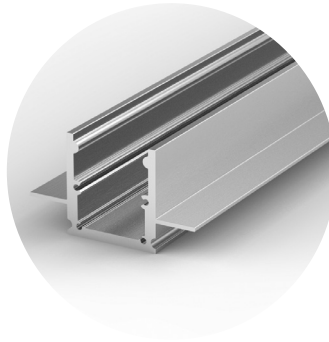
NOWOŚĆ



Profil architektoniczny
P25-2



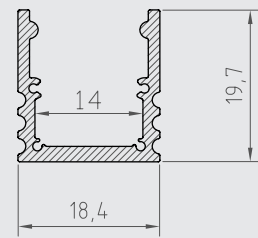
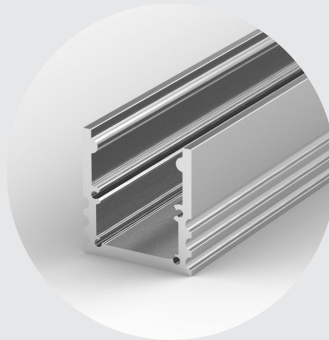
NOWOŚĆ



Profil architektoniczny
P25-3



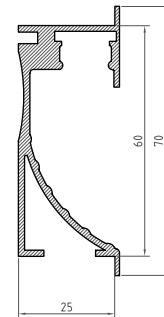
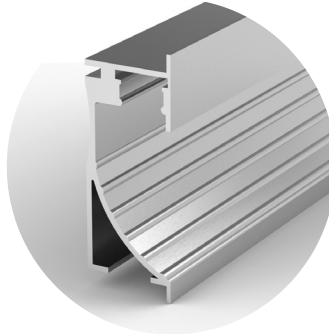
NOWOŚĆ



Profil ścienny
P26-1



NOWOŚĆ

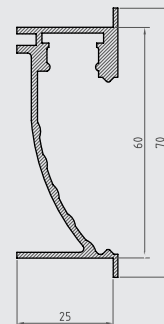
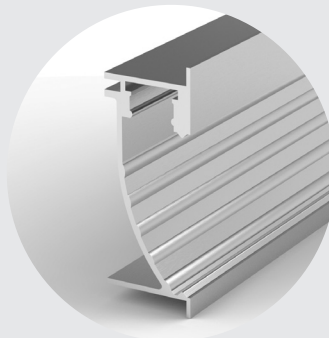


2:1

Profil ścienny
P26-2



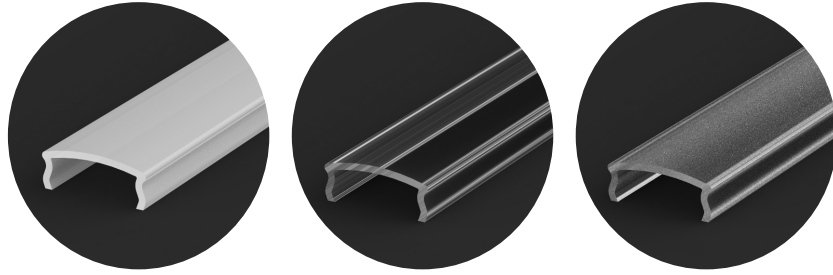
NOWOŚĆ



2:1

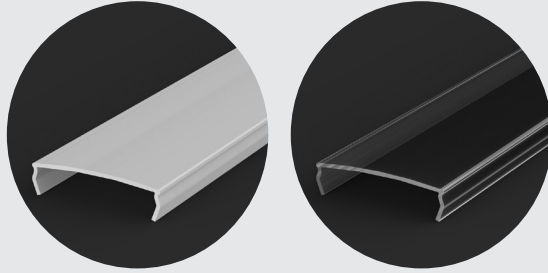
legenda:  profil surowy  profil anodowany  profil lakierowany na biało  profil lakierowany na czarno

Osłonka
C1



P2-1, P3-1, P4-1,
P5-1, P6-1, P7-1,
P8-1, P15-1, P16-1,
P17-1, P18-1, P19-1,
P26-1, P26-2

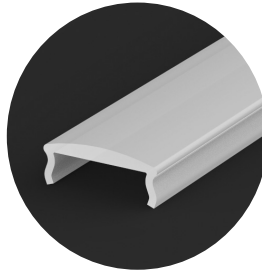
Osłonka
C2



P13-1, P14-1

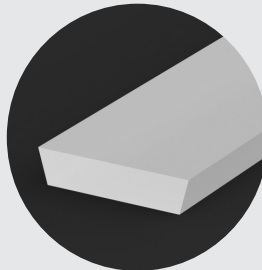
Osłonka
C4

NOWOŚĆ



P2-1, P3-1, P4-1,
P5-1, P6-1, P7-1,
P8-1, P15-1, P16-1,
P17-1, P18-1, P19-1,
P26-1, P26-2

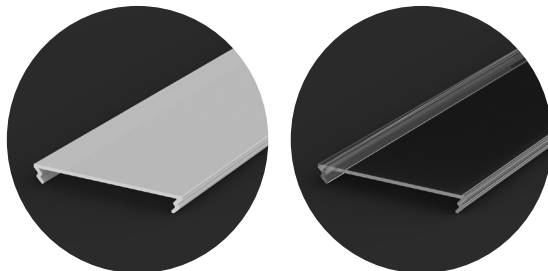
Osłonka
C5



P11-1, P24-1

Osłonka
C6

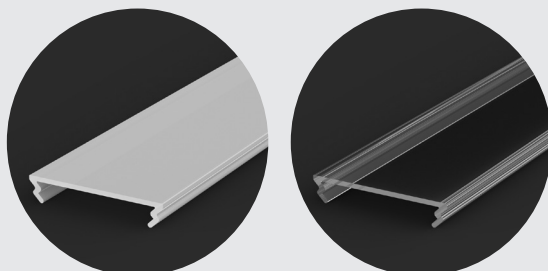
NOWOŚĆ



P20-1, P21-1,
P23-1, P23-2,
P23-3, P26-2

Osłonka
C7

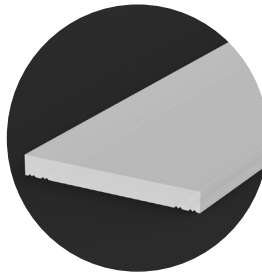
NOWOŚĆ



P22-1, P22-2,
P22-3

Osłonka
C8

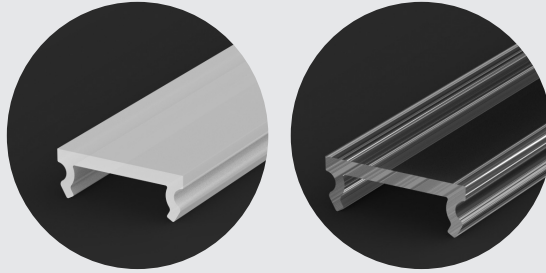
NOWOŚĆ



P24-2

Osłonka
C9

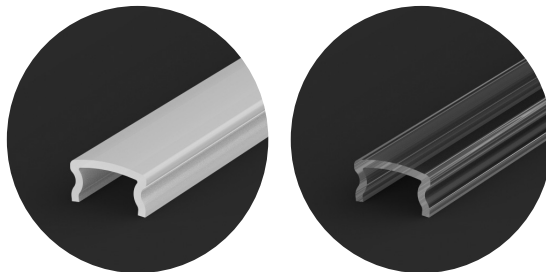
NOWOŚĆ



P25-1, P25-2,
P25-3

Osłonka
C10

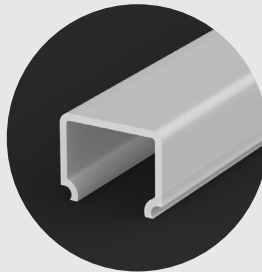
NOWOŚĆ



P4-2

Osłonka
C11

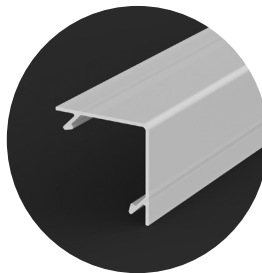
NOWOŚĆ



P4-1, P4-3

Osłonka
C12

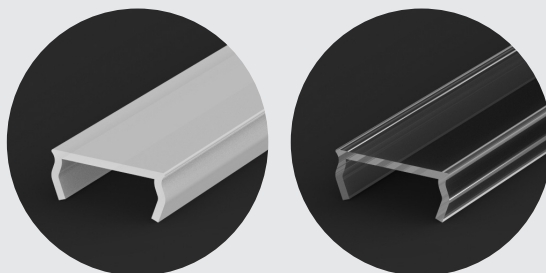
NOWOŚĆ



P12-1

Osłonka
C13

NOWOŚĆ






P3-1, P4-1, P5-1,
P6-1, P7-1, P15-1,
P16-1, P17-1, P18-1,
P26-1, P26-2




ADRES

Tech-Light Sp. z o.o.
ul. Zupnicza 17
03-821 Warszawa

TEL.

 +48 698 279 288
 +48 696 566 940
 +48 882 424 058

TEL.




 +48 668 572 369
 +48 668 572 369
 +48 668 572 369




www.tech-light.com.pl
handlowy@tech-light.com.pl



TECH
L I G H T

ADRES Tech-Light Sp. z o.o.
ul. Zupnicza 17
03-821 Warszawa

TEL.  +48 698 279 288
 +48 696 566 940
 +48 882 424 058

TEL.  +48 668 572 369
 +48 668 572 369
 +48 668 572 369

www.tech-light.com.pl
handlowy@tech-light.com.pl